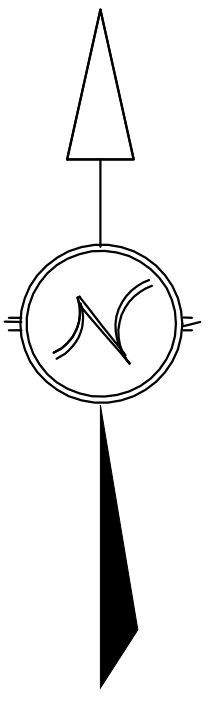


BPI owned TS.
43°10'40.70"N, 80°20'0.59"W



NO.	DATE	BY	CHKD.	APPRD.	REVISIONS
1	MAY 2 2012	W B			FIRST ISSUE
2	MAY 23 2012	W B			UPDATED SWITCHING ON GEECH TO MATCH SWITCHING SCHEMATIC AND DID NEW EXPORT.
3	AUG 1 2012	W B			MOVED MER-4 SWITCH TO PROPERTY SOUTH OF HACHBORN AS PER FIELD CHECK.
4	NOV 21 2012	W B			MSG-1 SET TO N.C. AND 32MS-13 SET TO N.O. TO EXTEND PM1

NOTES:

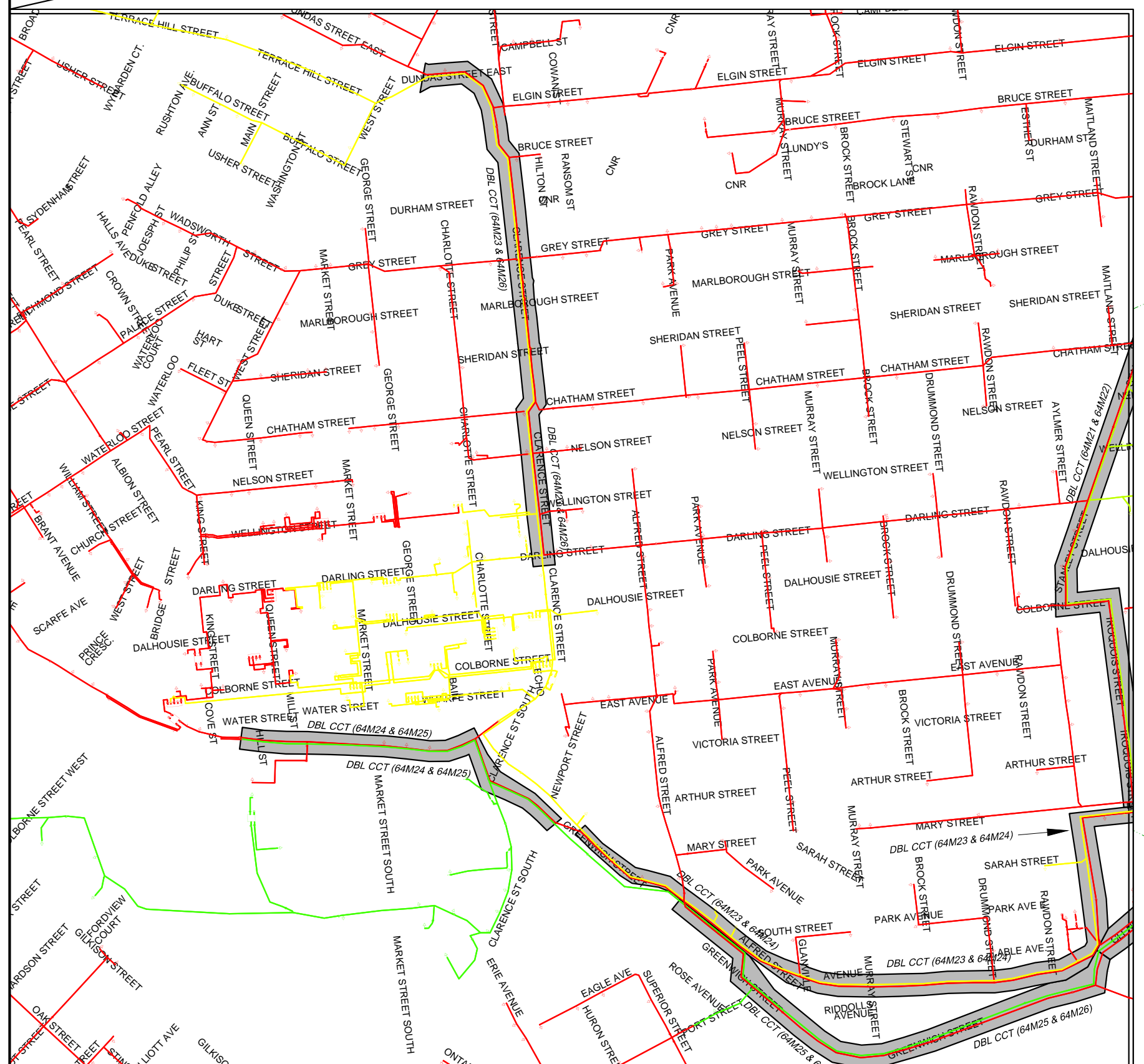
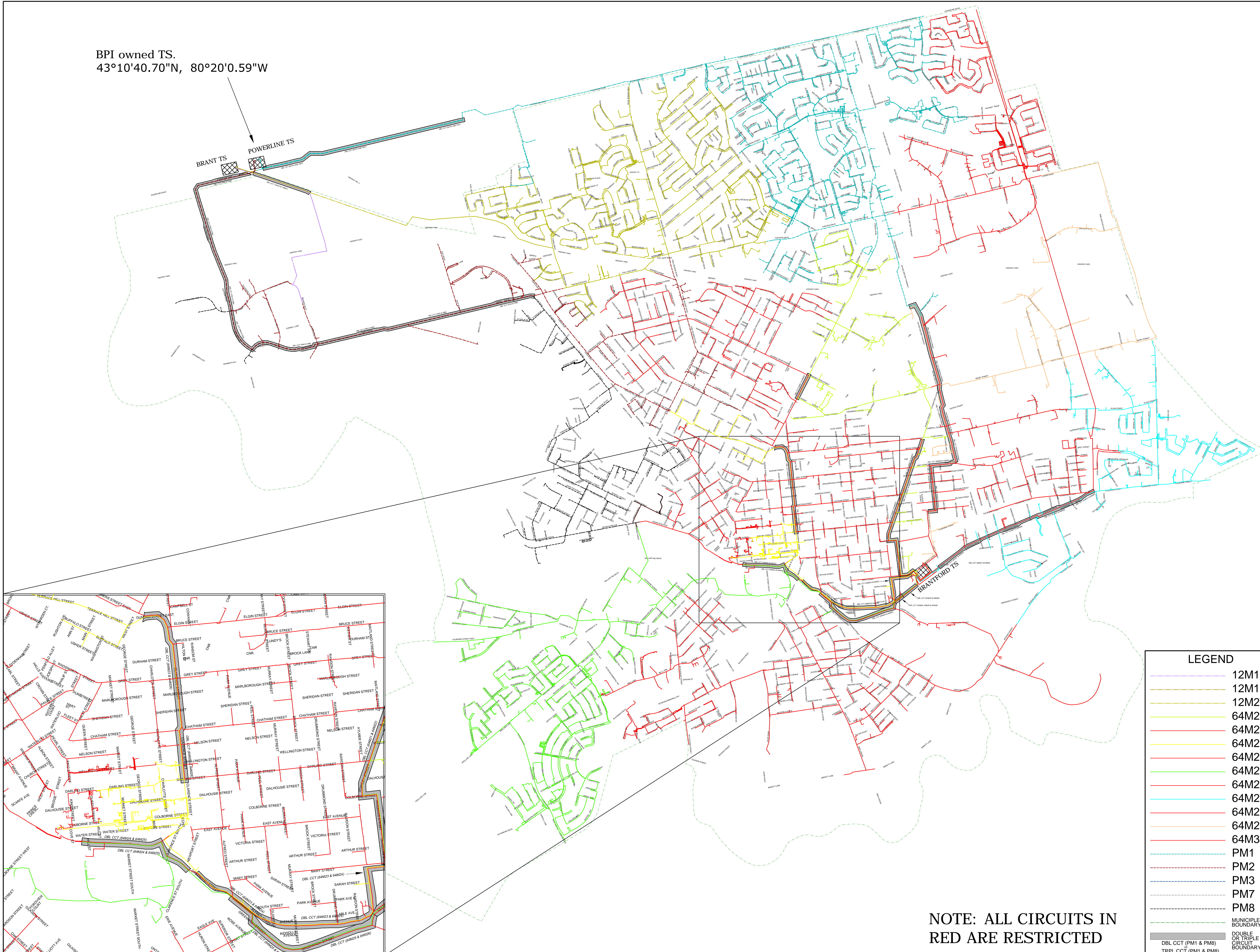
CAUTION

THE POSITION OF POLE LINES, CONDUITS, WATERMANS, SEWERS AND OTHER UNDERGROUND AND OVERGROUND UTILITIES AND STRUCTURES IS NOT NECESSARILY SHOWN ON THE CONTRACT DRAWINGS, AND, WHERE SHOWN, THE ACCURACY OF THE POSITION OF SUCH UTILITIES AND STRUCTURES IS NOT GUARANTEED. BEFORE STARTING WORK, THE CONTRACTOR SHALL INFORM HIMSELF OF THE EXACT LOCATION OF ALL SUCH UTILITIES AND STRUCTURES, AND SHALL ASSUME ALL LIABILITY FOR DAMAGE TO THEM.



**27kV CIRCUIT
GEOGRAPHICAL LAYOUT**

DESIGN:	SCALE:
W BURDEN	NTS
DRAWN:	DRAWING NUMBER:
W BURDEN	CIRCUIT LAYOUT-2012
CHKD.:	APPRD.:
SHEET 1 OF 1	PAGE NUMBER:
DATE:	
MAY 2, 2012	



LEGEND

	12M12
	12M13
	12M23
	64M21
	64M22
	64M23
	64M24
	64M25
	64M26
	64M27
	64M28
	64M29
	64M30
	PM1
	PM2
	PM3
	PM7
	PM8
	MUNICIPAL BOUNDARY
	DOUBLE OR TRIPLE CIRCUIT BOUNDARY
	DBL CCT (PM1 & PM8)
	TRPL CCT (PM1 & PM8)

NOTE: ALL CIRCUITS IN RED ARE RESTRICTED